

PowerShocker LGT-2500S



NEW



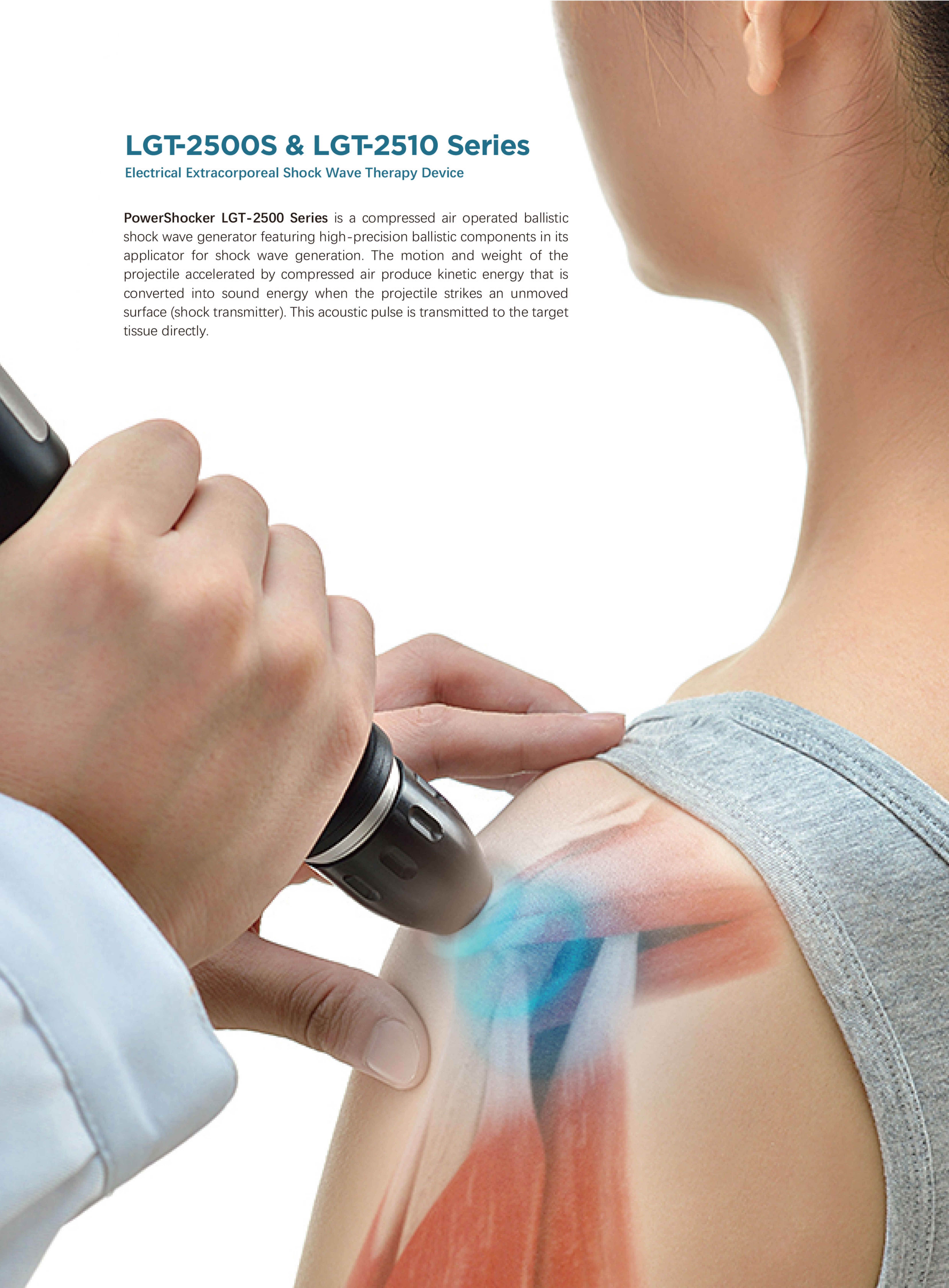
Health Life Longest Care

Longest

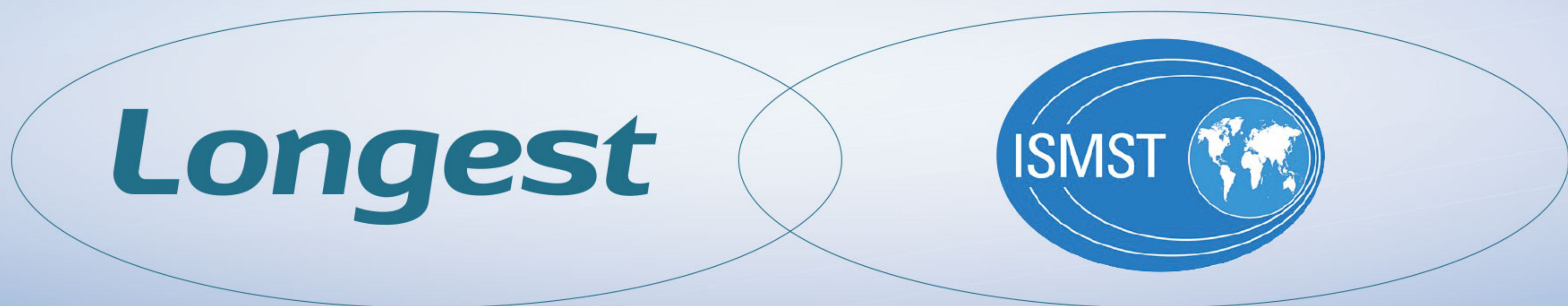
LGT-2500S & LGT-2510 Series

Electrical Extracorporeal Shock Wave Therapy Device

PowerShocker LGT-2500 Series is a compressed air operated ballistic shock wave generator featuring high-precision ballistic components in its applicator for shock wave generation. The motion and weight of the projectile accelerated by compressed air produce kinetic energy that is converted into sound energy when the projectile strikes an unmoved surface (shock transmitter). This acoustic pulse is transmitted to the target tissue directly.



LONGEST is the promoting member of ISMST

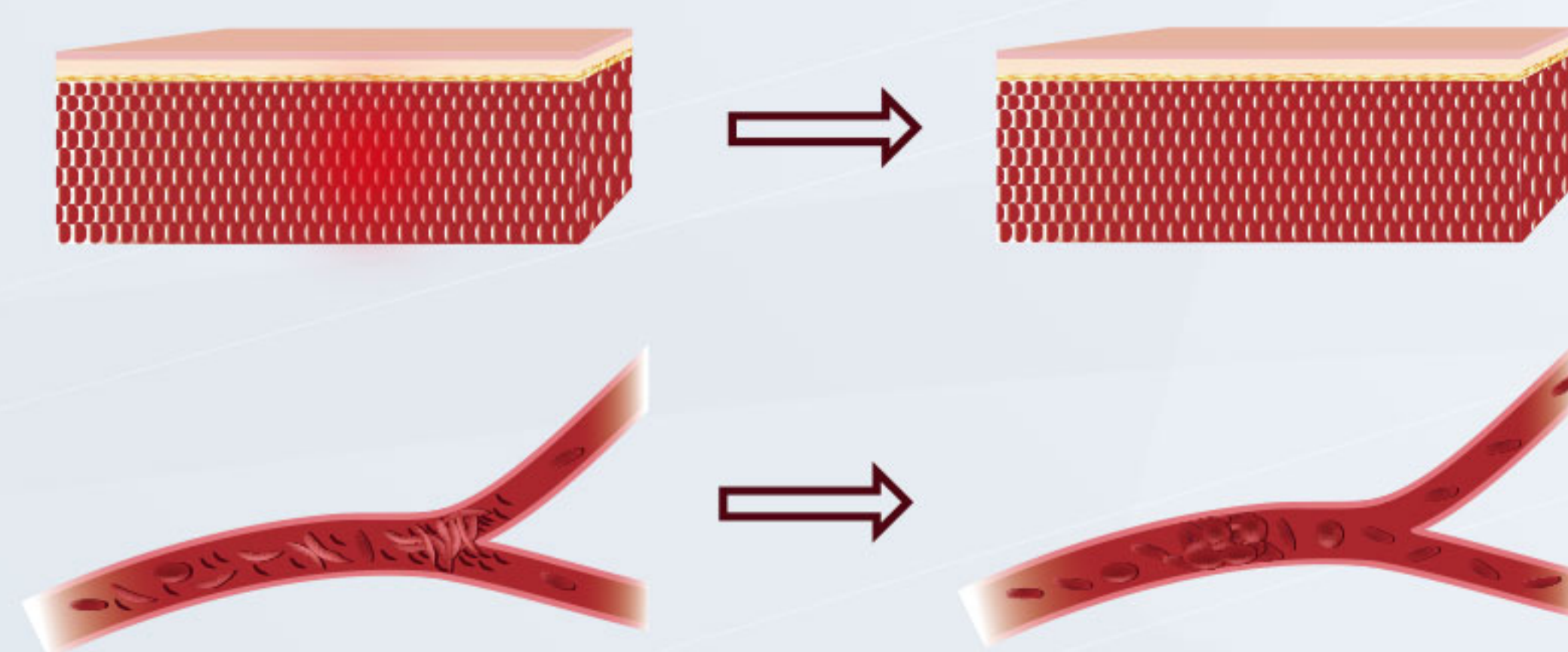


⊕ Medical Background

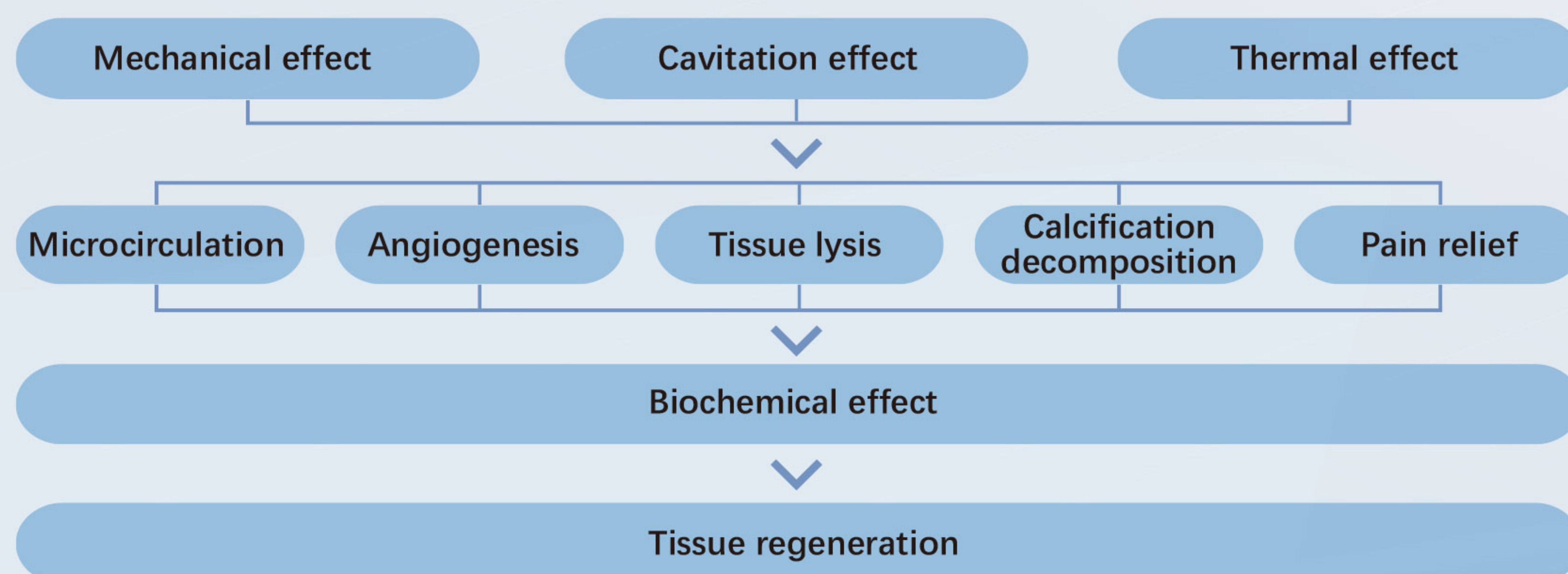
The extracorporeal acoustic wave therapy (in contrast with lithotripsy) is not used to disintegrate tissue but rather to cause microscopic interstitial and extracellular biological effects which include e.g. tissue regeneration. Application of shock waves leads to significantly increased expression of growth indicators such as eNOS, VEGF, PCNA and BMP. Newly formed blood vessels improve blood supply and oxygenation which leads to faster healing. Acoustic waves also cause mast cell activation which supports chronic inflammation reversal. Other effects include stimulation of collagen production, calcified fibroblasts dissolution and dispersion of pain mediator „substance P “.

⊕ Biological Effects

- ⊕ High-density tissue splitting
- ⊕ Tissue adhesiolysis
- ⊕ Dilate blood vessels and angiogenesis
- ⊕ Analgesic and closing nerve endings
- ⊕ Tissue injury and repair
- ⊕ Control inflammation and infection



⊕ Physical Property



Radial shock wave therapy device, the best choice for non-invasive treatment of musculoskeletal diseases



Two Channels
Up to 5.0 Bar Up to 35Hz



⊕ Indications

Shoulder

- ⊕ Calcifying supraspinatus tendinitis
- ⊕ Subscapularis tendinitis (Deltoid bursitis)
- ⊕ Frozen shoulder
- ⊕ Biceps tendinitis

Upper limbs

- ⊕ External humeral epicondylitis (Tennis elbow)
- ⊕ Internal humeral epicondylitis (Golf elbow)
- ⊕ Finger tendinitis
- ⊕ Trigger point

Lower limbs

- ⊕ Patellar tendonitis
- ⊕ Shin splints
- ⊕ Achilles tendinitis
- ⊕ Plantar fasciitis
- ⊕ Iliotibial band friction syndrome
- ⊕ Anserine bursitis
- ⊕ Trigger point




Hip

- ⊕ The femoral greater trochanterpain syndrome
- ⊕ Piriformis syndrome
- ⊕ Sciatica
- ⊕ Trigger point

Torso

- ⊕ Erector spinae pain
- ⊕ Soft tissue pain
- ⊕ Trigger point

⊕ Technical Specification




Model Number	LGT-2500S(NEW)	LGT-2500S	LGT-2510A	LGT-2510B
Image				
Channel	2 1 for Shockwave handpiece, 1 for Vibration handpiece	1	1	2
Display Screen	7" LCD Touch	7" LCD Touch	10" LCD Touch	
Pressure Range	1.0~5.0 Bar	1.0 – 4.0 Bar	1.0 – 5.0 Bar	
Frequency	1~22Hz	1 – 17Hz	1 – 22 Hz	
Vibration handpiece :	1~35Hz	/	/	
Pulsed Shock Mode	Yes	Yes	Yes	
Pre-set Protocols	Yes	Yes	Yes	
User-defined Protocol	Yes	Yes	Yes	
Patient Database	No	No	Yes	
VAS Score	No	No	Yes	
Item Dimension	39.5 (L) x 39 (W) x 19.4 (H) cm	39.5 (L) x 39 (W) x 19.4 (H) cm	54.2 (L) x 44.5 (W) x 107.6 (H) cm	
Item Weight (Handpiece Excluded)	11.3 kg	8.5 kg	55 kg	58.0 kg

⊕ Transmitter

Transmitters						
Type	6 A (D = 6 mm Acupuncture)	15 R (D = 15 mm Radial)	15 F (D = 15 mm Focus)	15 D (D = 15 mm Deep)	20 R (D = 20 mm Radial)	36 R (D = 36 mm Radial)
Penetration Depth	0 – 40 mm	0 – 40 mm	0 – 20 mm	0 – 60 mm	0 – 50 mm	0 – 50 mm
Indications	Acupuncture shockwave therapy	pain therapy in tendon disorders/ calcified shoulder/ heel spur/ etc.	Close to surface pain areas/ fascial muscles/ neck/ head/ individual triggers	Trochanter bursitis/ chronic tendon terminal disease	Treatment of deep-seated muscles/ myofascial trigger therapy/ muscle- and connective tissue/ dissolution of fibrosis	Treatment of deep-seated muscles/myofascial trigger therapy/ muscle- and connective tissue/ back muscles/ skin elasticity/ dissolution of fibrosis



V-Handpiece

V-Transmitters			
diameter (mm)	10	25	40
Suggested scope of application	Selective treatment of muscle spots	Smooth muscle, massage along the direction of the muscle bundle to exclude lymphatic fluid	Large area muscle massage after shock wave treatment